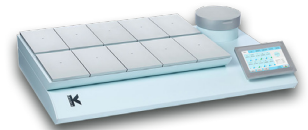
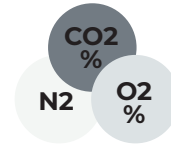
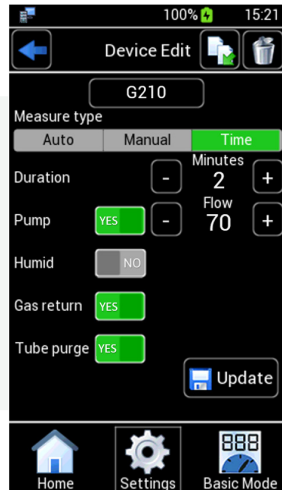


**RECOMMENDED  
DEVICE SETUP  
IN LEO 2.0  
FOR GAS  
MEASUREMENT**



**PRECAUTIONS:**

- Please be cautious with your cultured embryos, considering that during the measurement procedure the composition of the gas in the chamber may be affected.
- Read the manuals for the incubator and LEO 2.0 for usage and safety details.



Evaluate the need for chamber cleaning and disinfection after working on the incubator.



As good practice, it is recommended to have LEO 2.0 charged before use, and not to charge it during use.



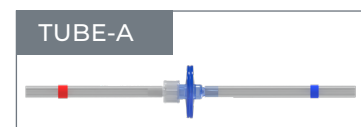
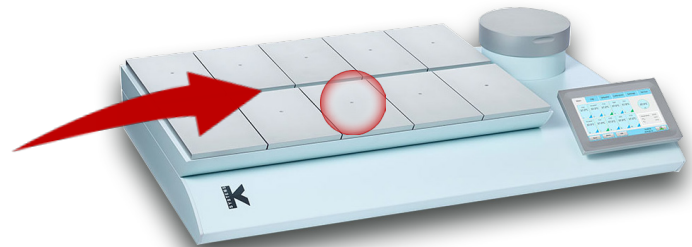
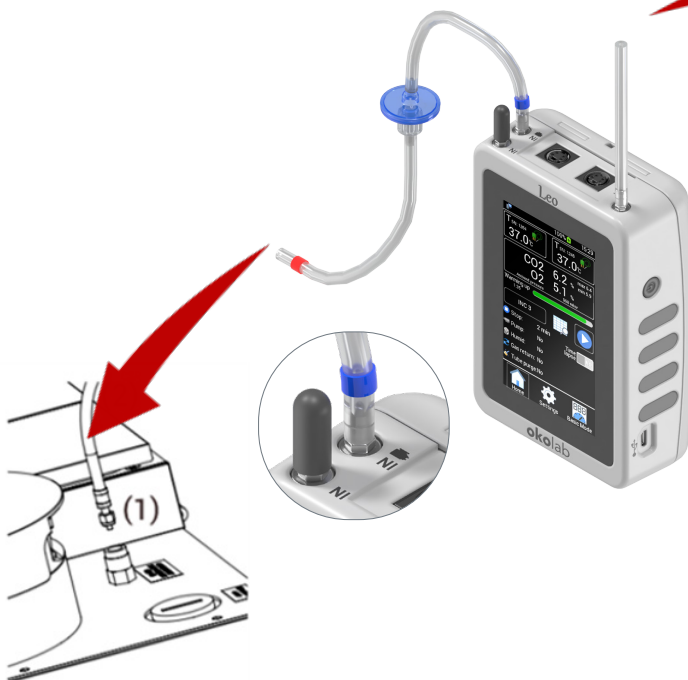
Always read the manual of the devices.



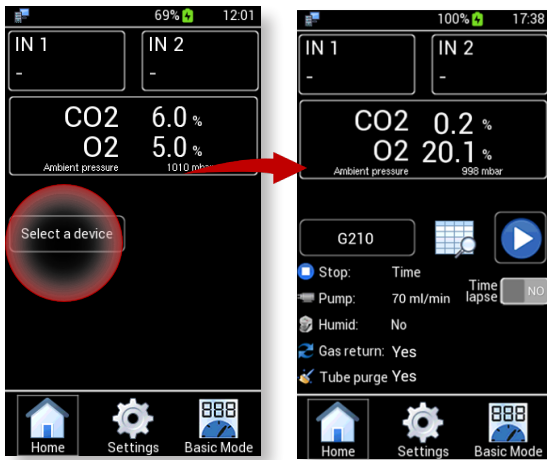
If LEO 2.0 shows a message that it's warming up, it is advised to complete the warm up period before using.

**STEP 1**

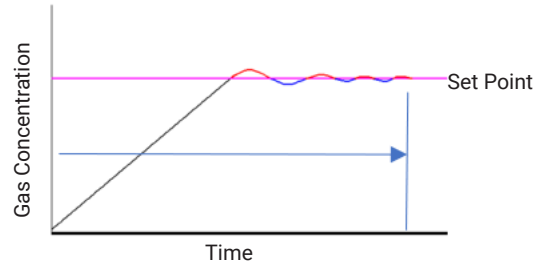
From **G210** menu, stop the flow to the mixing chamber. Connect **LEO 2.0's IN** port and to the G210 gas Sample port. Connect the **LEO 2.0's OUT** port to the front middle chamber by using a 25-gauge needle through the silicon plug, to return the sampled gas back to **G210**.



**STEP 2** Select Device.



**STEP 3** Give at least 10 minutes for G210 to stabilize the gas concentration in the chambers. Do not open the lids.



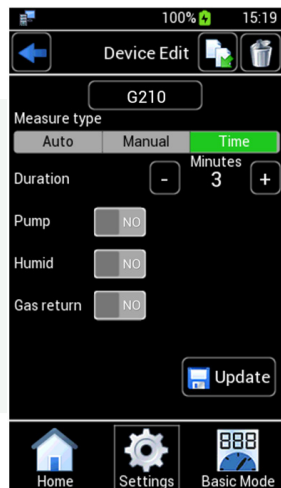
If the gas value on G210's display is stable for a period of 10 minutes, proceed to the **Next step**.

**STEP 4** Start a LEO 2.0 gas measurement.



**OPTION 2 IN DIFFUSION**

**RECOMMENDED  
DEVICE SETUP  
IN LEO 2.0  
FOR GAS  
MEASUREMENT**



No gas return to the incubator.  
Select Device, let stabilize and Start measurement.

